

Questionnaire survey on

The agenda for basin-level management

**4th NARBO General Meeting, Makassar
11 November 2010**

By S Budi Prayitno

Question:

**Pls indicate
the *job-related relevance* to you
of different networking modalities and
different topics and themes**

**... with 13 proposed networking modalities
and 37 proposed topics/themes**

Respondents:	26
---------------------	-----------

... with leadership experience:	19
--	-----------

... from RBOs:	17
-----------------------	-----------

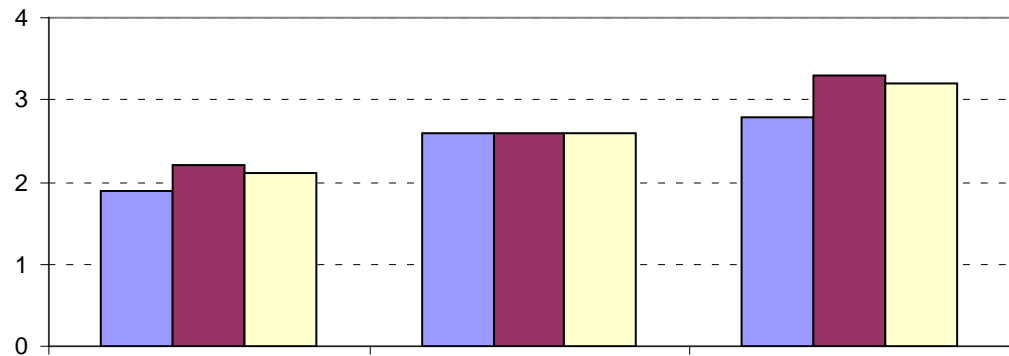
Junior:	7
----------------	----------

Mid-career:	10
--------------------	-----------

Senior:	9
----------------	----------

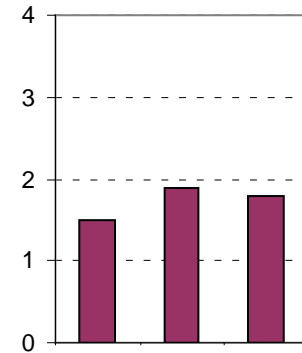
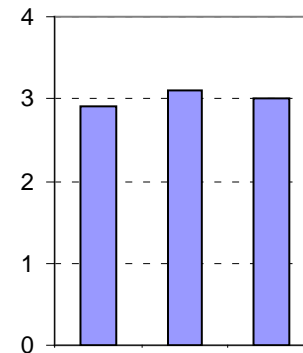
Average ratings of relevance:

	Junior	Mid-career	Senior
Networking	1.9	2.6	2.8
Topics/themes	2.2	2.6	3.3
Over-all	2.1	2.6	3.2



Average ratings of relevance:

	Leaders ¹⁾	Others
Networking	2.9	1.5
Topics/themes	3.1	1.9
Over-all	3.0	1.8



1) Respondents with leadership experience

Ratings of networking modalities:

Internet blog

Journal

Informal dist. learning

Internships/secondmnts

Newsletter

Formal dist. learning

Internet portal

Case studies

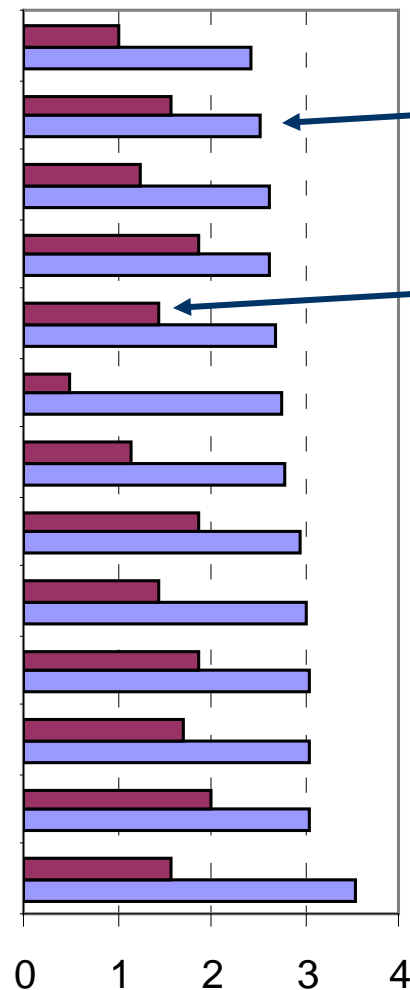
Seminars

Joint courses

Joint studies

Joint WGs

Study tours, exch visits

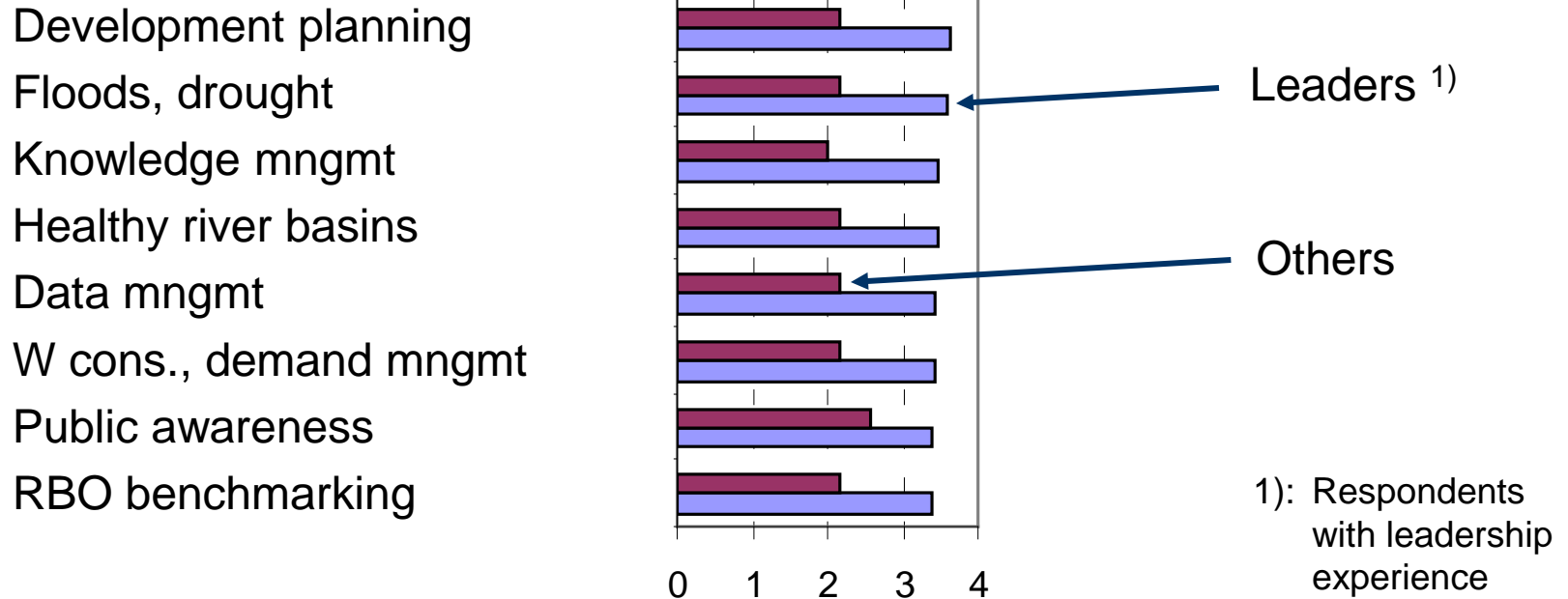


Leaders 1)

Others

1): Respondents with leadership experience

Examples of highly rated topics/themes:



Actually, these were the 8 topics/themes ranked highest by leaders – but the difference (from other topics/themes) is not significant

Examples of less highly rated topics/themes:

Permits, licensing, fees

Inland fisheries

Media relations

Funding, cost recovery

Upland areas

Gender

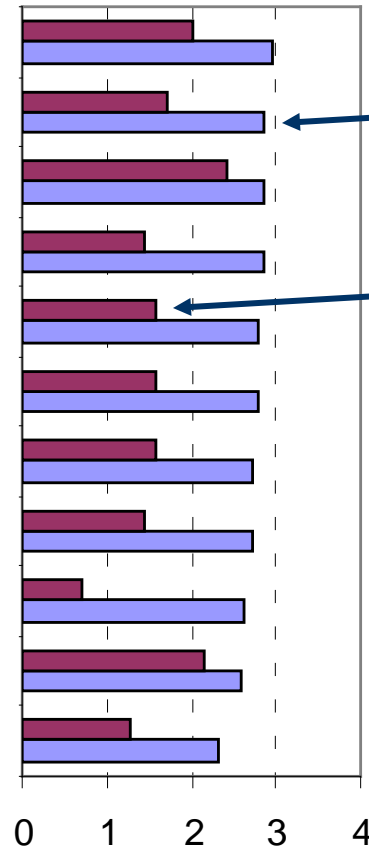
Spills and accidents

Salinity control

ISO certification

Tourism

Navigation, waterways



Leaders ¹⁾

Others

1): Respondents with leadership experience

Actually, these were the 11 topics/themes ranked lowest by leaders – but the difference (from other topics/themes) is not significant

Questions:

- **Senior staff express broader networking & knowledge needs than junior staff – why is this?**
- **Experienced leaders express broader networking & knowledge needs than others – why is this?**
- **How do the needs of networking and knowledge relate to leadership responsibilities?**

Bottom line:

- **Observations are indicative - a topic or theme can be relevant to one RBO even if regarded as irrelevant by others – difficult to compare!**
- **The agenda for basin-level management is influenced by given conditions (such as risks and opportunities specific to the basin) - as well as by the type of RBO and its state of consolidation**
- **The scope for networking and learning from each other remains undisputed**

**Thank you very much
for your kind attention!**